



Viré-Clessé



APPELLATION D'ORIGINE CONTRÔLÉE

Appellation Village of the *Mâconnais* region (Saône-et-Loire).

This *appellation*, created by a decree dated 26 February 1999, replaces the former white-wine *appellations* MÂCON-CLESSÉ and MÂCON-VIRÉ.

It includes no *Premier Cru Climat*.

On the label, the name of the *Climat* from which the wine comes may appear immediately below the words VIRÉ-CLESSÉ.

The label may also include the mention *Vin de Mâcon* or *Grand vin de Mâcon*.

Producing communes: **Clessé, Laizé, Monbellet, Viré.**

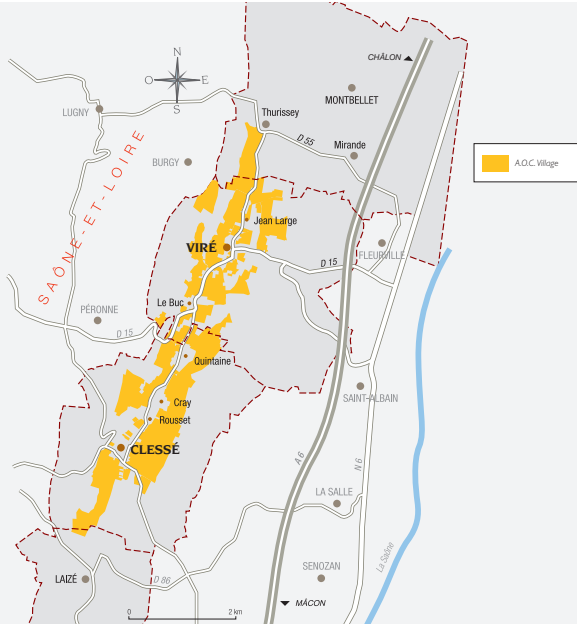
TASTING NOTES

The colour is a pale but brilliant gold, somewhere between white-gold and yellow, with in some cases greenish highlights. The nose makes an immediate and pleasant impression with a bouquet of may-flowers or acacia, springtime honeysuckle, and broom, together with notes of lemon balm, white peach, verbena, and mint or bracken. As the wine ages, quince jam and pine make their appearance. Lively and fresh, with a slight edge and yet well-rounded, this wine is a reliable introduction to the *Mâconnais* whites. It is delicate and supple and has a tender and spontaneous side with a touch of nervousity which does it no harm.

SERVING SUGGESTIONS

Its attack brings the mouth to life with its minty notes, and even more so by its pleasingly straightforward and rather lively approach. For this reason, tender meats in sauce - veal for example - do it justice since its vivacity adds depth and consistence to the food. Its aromatic intensity is also suited to poultry, crustaceans, and sautéed vegetables. It is also the perfect partner for cooked seafood. Cheeses of the Camembert type will be set off by its slight sharpness, and goat cheeses will also make ideal companions.

Serving temperature: 11 to 13°C.



LOCATION

The *appellation* VIRÉ-CLESSÉ achieved recognition in 1998 and was launched a year later. It is the first *appellation Village* to be formed from outstanding *terroirs* within the AOC Mâcon Villages. Viré and Clessé are two communes in southern Burgogne lying between Tournus and Mâcon. Because the wines of the two villages closely resemble each other in typicity, it was decided to form them into a single *appellation*, although the *terroirs* included in it were subjected to a rigorous selection process. Viré and Clessé also produce wines of the *appellations* Mâcon, Bourgogne and Mâcon-Villages. The names Mâcon-Viré and Mâcon-Clessé have been in disuse since 2002.

SOILS

The *appellation* consists of two hill-slopes running North-South between the valleys of the Bourbonne and the Mouge. The rocks are fossiliferous Bajocien limestones and Jurassic (Oxfordian) strata of marly-limestone. Other soils at the foot of the slopes are clays containing sandstone pebbles known as «chailles». They are well-drained and East-facing. Also found here are soils containing white limestone pebbles typical of the *Mâconnais* and known as «cray». It is the best soil for the *Chardonnay* grape. Altitudes: 200-440 meters.

COLOUR(S) AND GRAPE VARIETY(IES)

Whites only - *Chardonnay*.

PRODUCTION

Area under production*:
1 hectare (ha) = 10,000 m² = 24 *ouvrées*.
437.34 ha.

Average annual yield:**
1 hectolitre (hl) = 100 litres = 133 bottles.
26,305 hl.

*In 2018 **5 years average, 2014-2018

PRINCIPAL CLIMATS

Commune of Clessé: **Breillonde, Quintaine, Le Chêne, La Troupe.**
Commune of Viré: **Le Creusseromme, Le Chapitre, Chazelle, Roally, L'Épinet.**